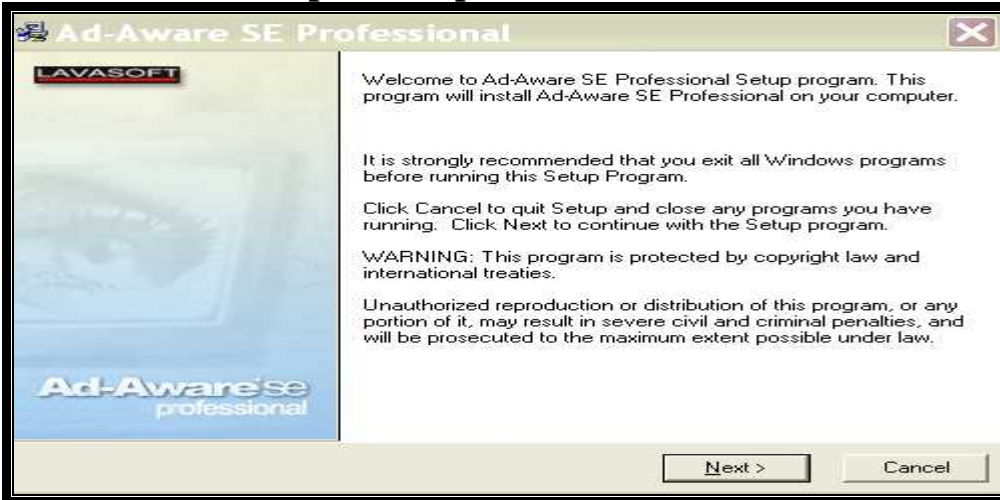


Installare AD-AWARE S.E Prof

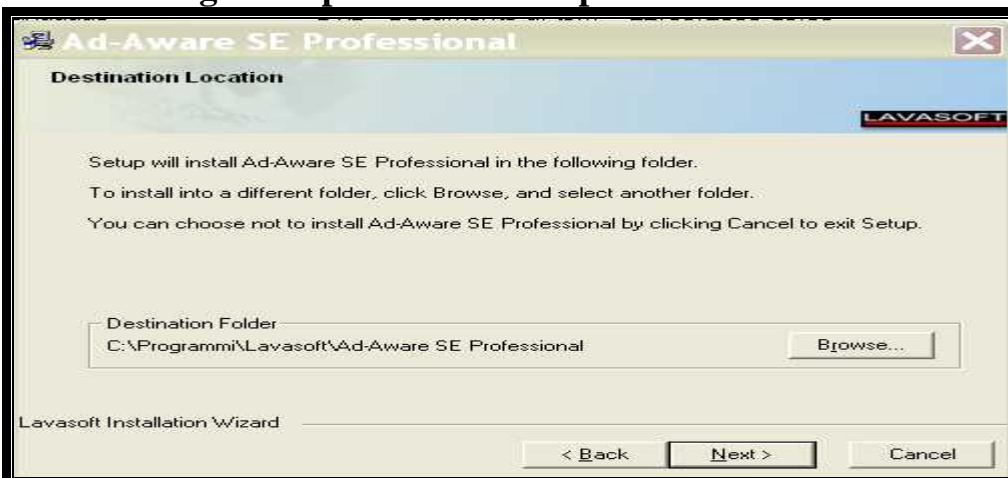
Lanciare il file setup <aawsepro> vedi finestra < welcome >



Clic <next> vedi finestra <licence agreement>



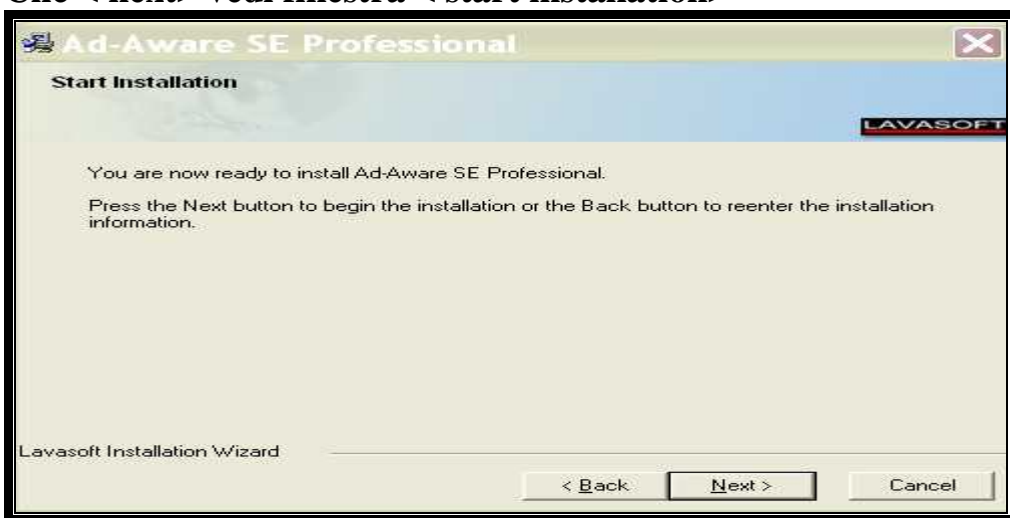
Inserire il segno di spunta su <i accept the licence > vedi finestra



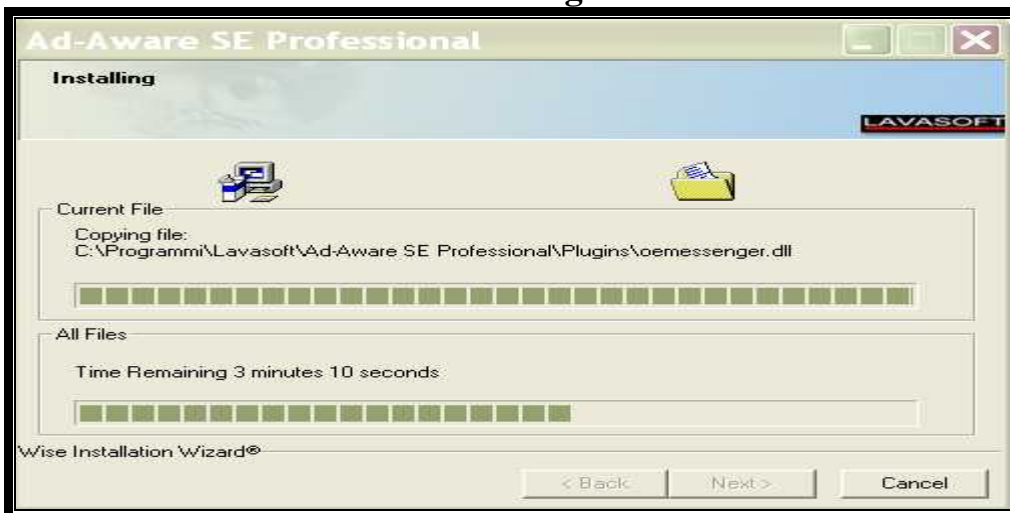
Clic <next> vedi finestra <install to all user's menu>



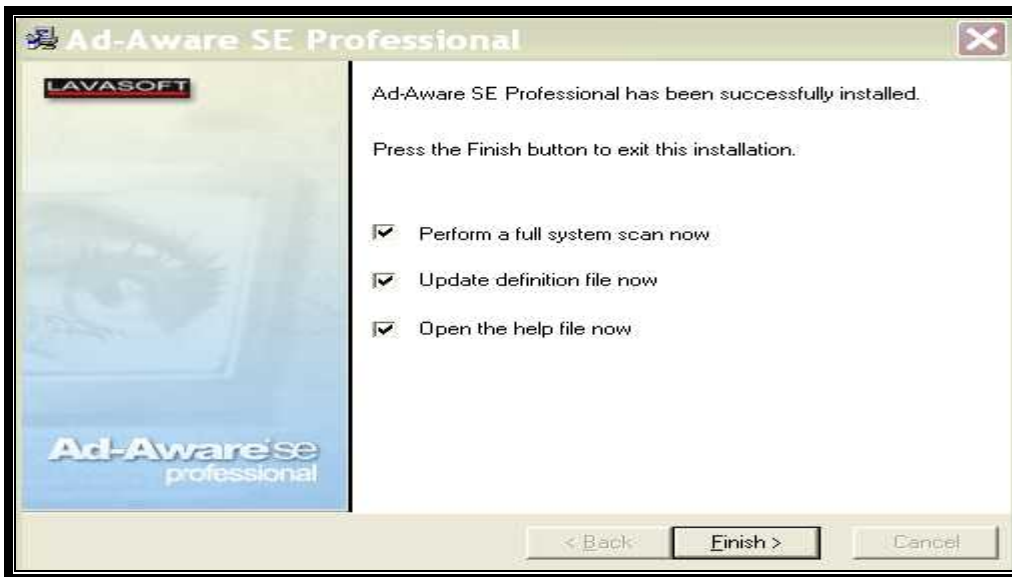
Clic < next> vedi finestra < start installation>



Clic <next> vedi finestra < installing >



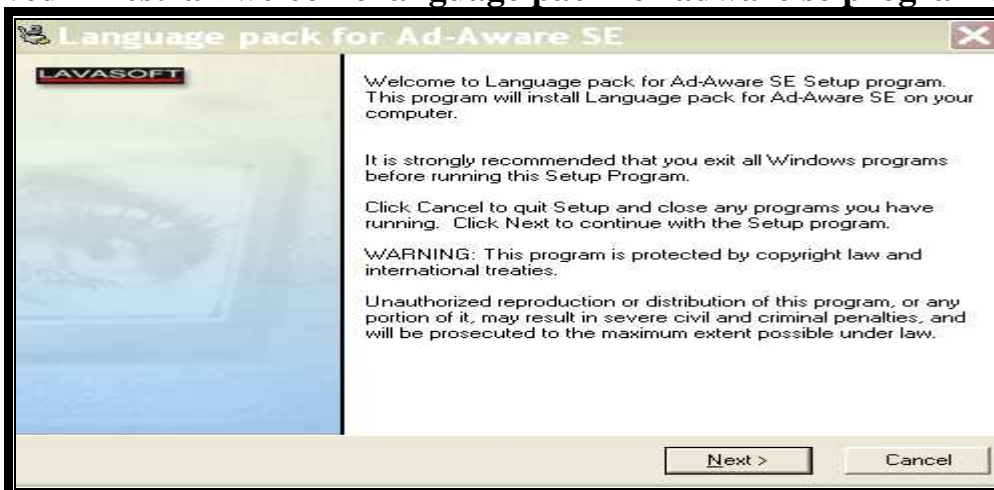
Dove si vedrà il download ,al termine vedi finestra Ad-aware SE Professional has been successfully installed>



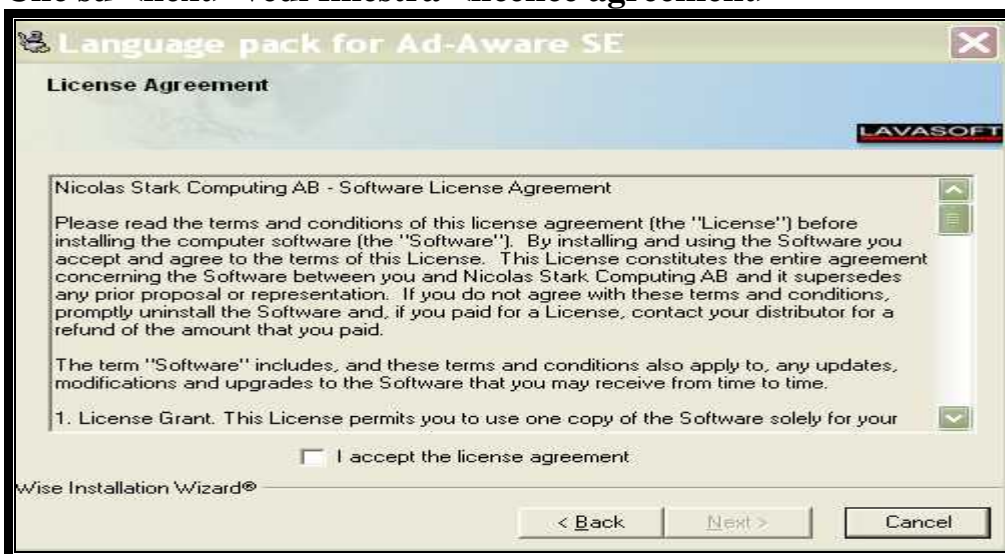
Clic <finish>

Lanciare il file setup<pllangs>

vedi finestra < welcome language pack for adware se program >

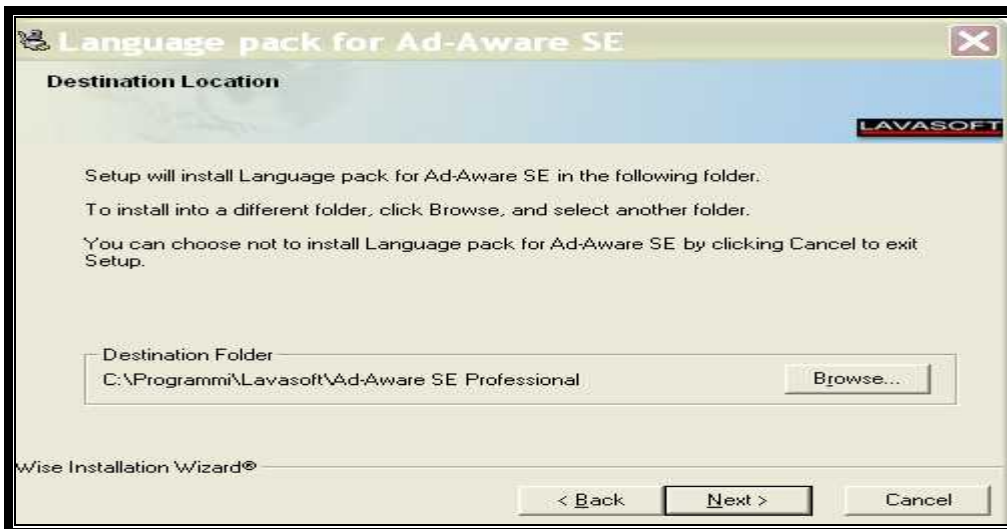


Clic su <next> vedi finestra <licence agreement>



Inserire il segno di spunta su <i accept the licence agreement>

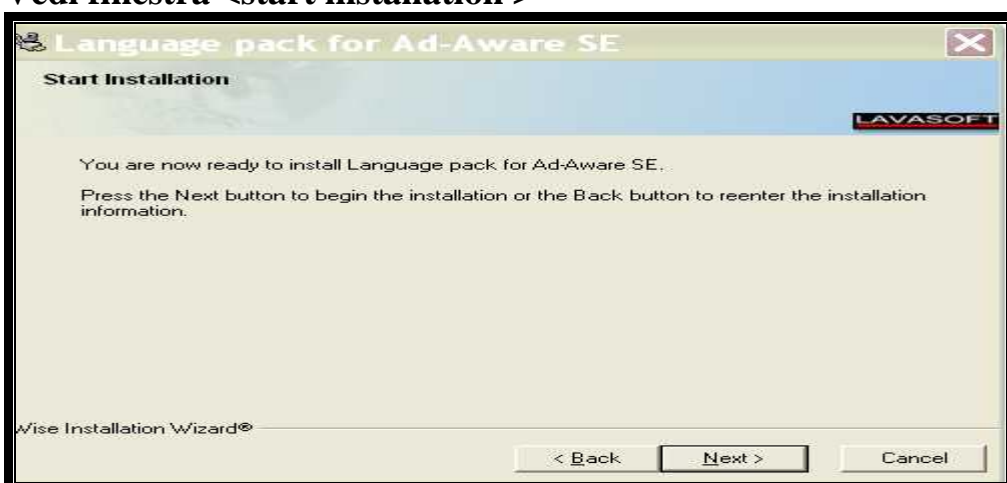
Vedi finestra <destination location>



Clic next> vedi finestra <select components>



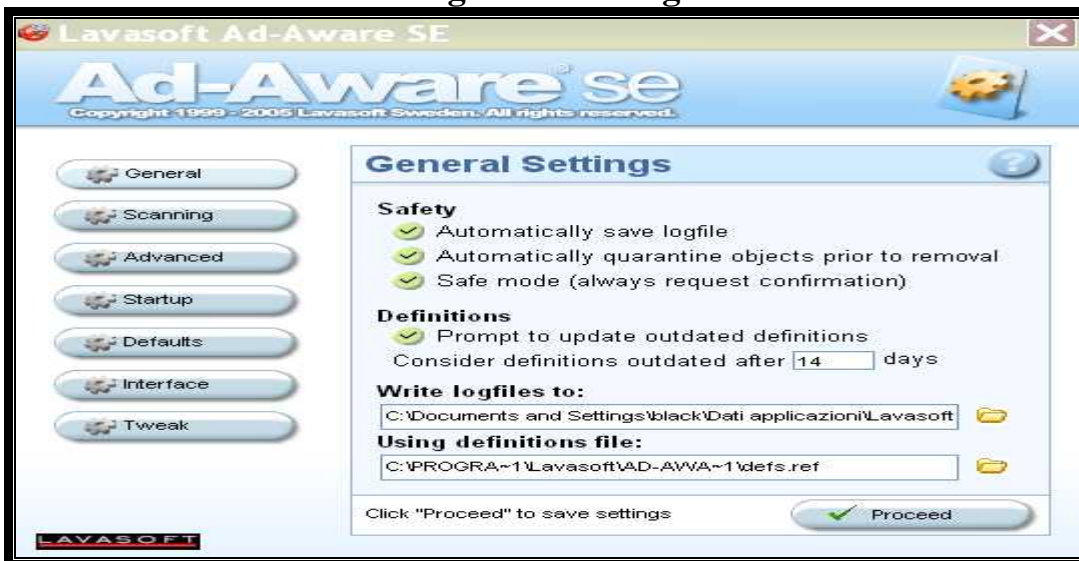
**De- selezioniamo tutte le lingue eccetto l'italiano> e clic <next>
 Vedi finestra <start installation >**



Clic <next> vedi finestra <language pack for ad-aware>



Clic <finish> vedi finestra <general setting>



Clic <procede> vedi finestra finale <interface setting >



Ora possiamo usare il programma per la ricerca dei vari cookie –spyware ecc-
Fine del programma