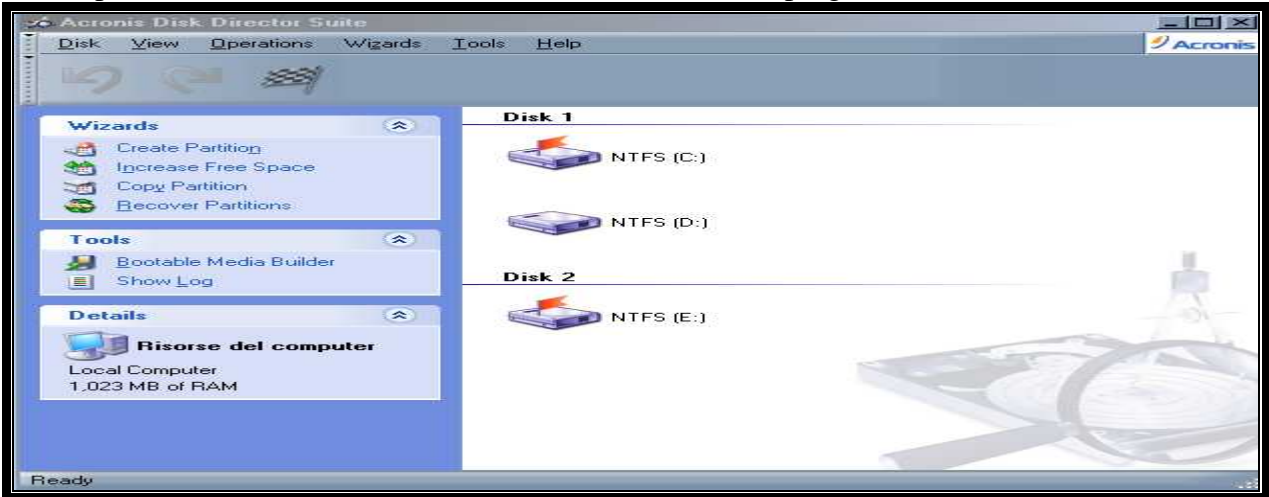
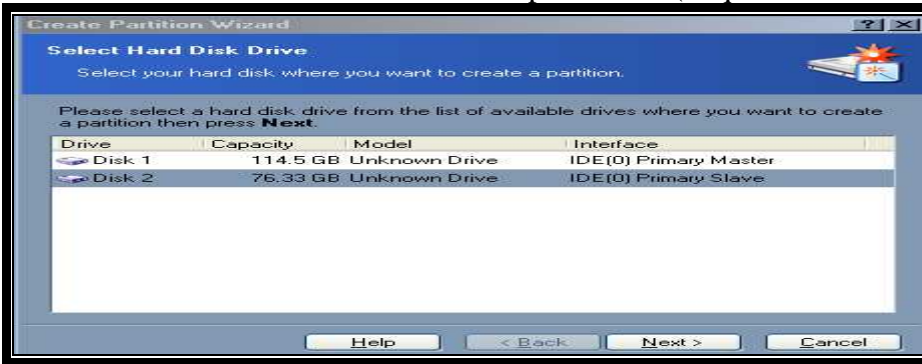


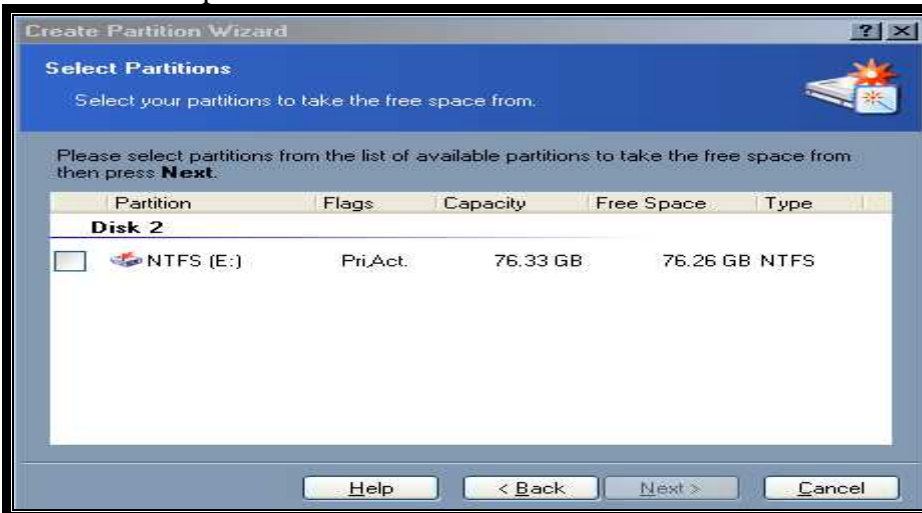
Creare partizione con < Acronis disk direct suite > lanciare il programma



Selezionare l'HD a cui si vuole creare la partizione (in questo caso il disk 2)



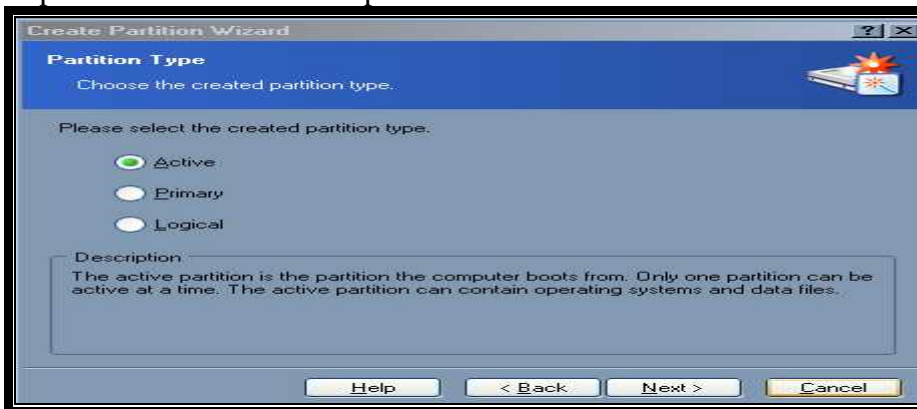
Clic su <create partition> e clic next



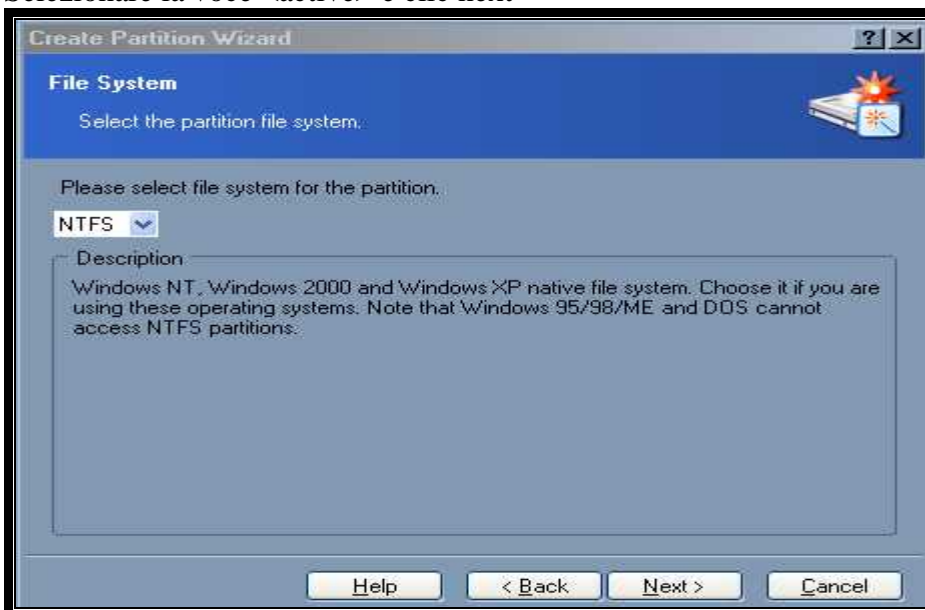
Selezionare il HD e clic su next



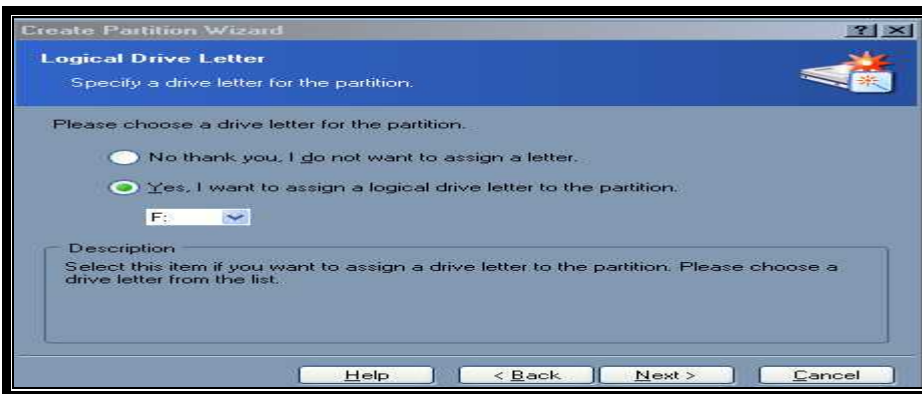
Impostare i nuovi dati della partizione da creare e clic next



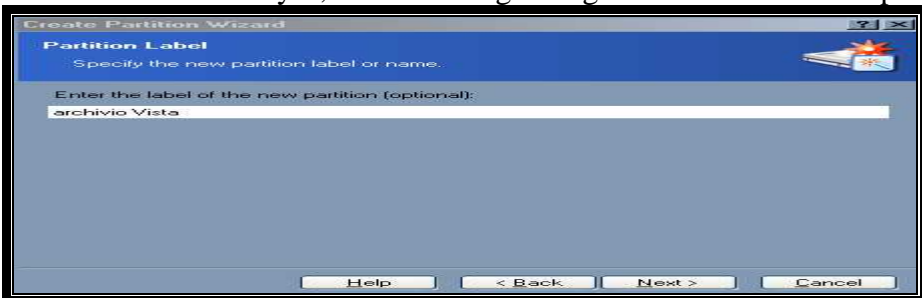
Selezionare la voce <active> e clic next



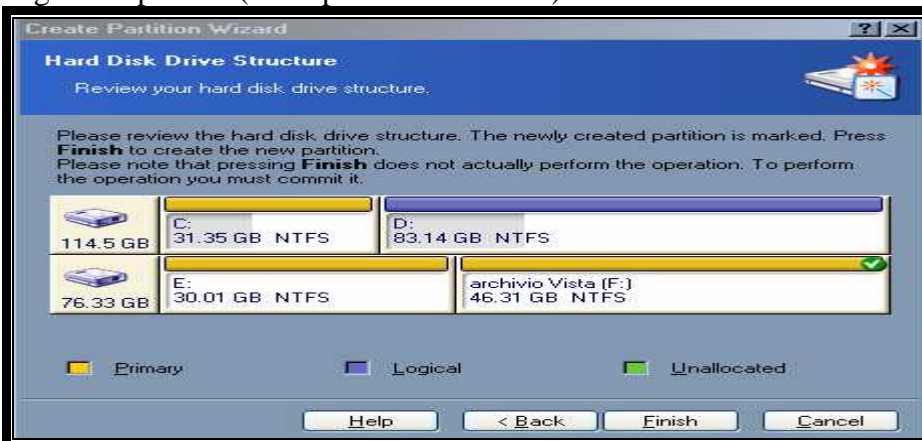
Dal menù a discesa scegliere NTFS e clic next



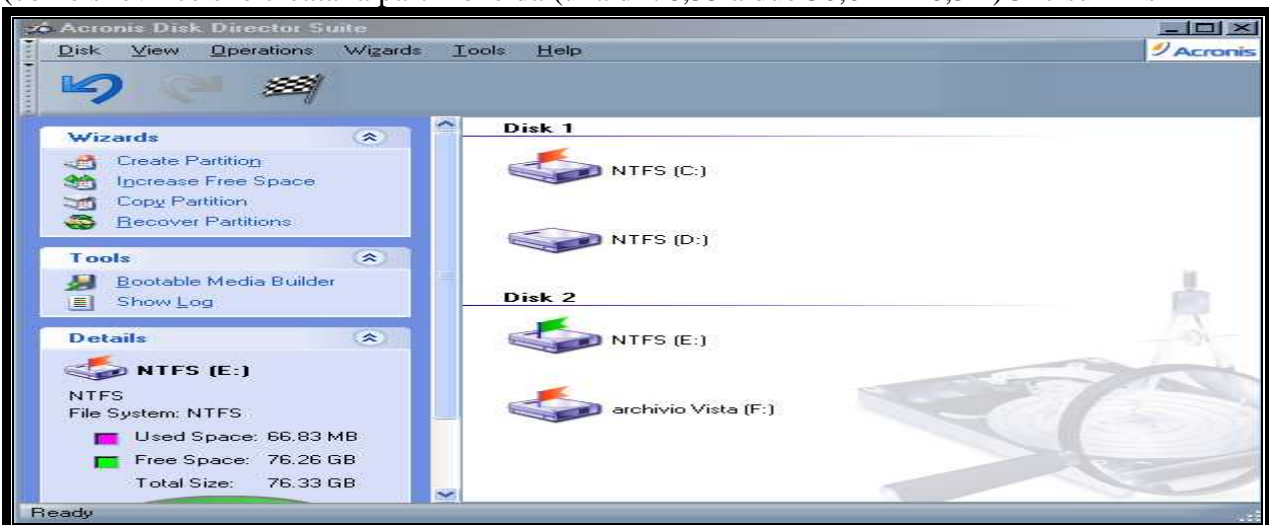
Selezionare la voce < yes, i want to assign a logical drive letter to the partition > e clic next



Digitare a piacere (esempio archivio Vista) e clic next



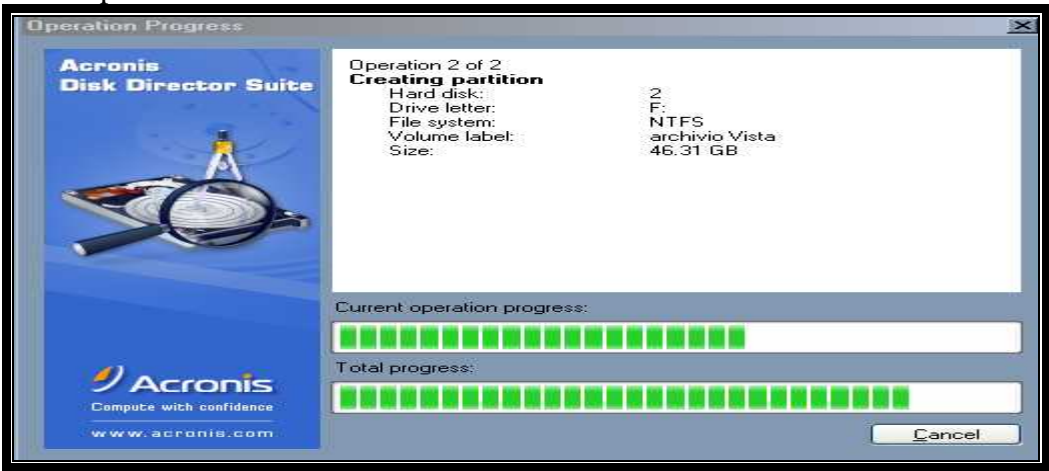
(come si evince si è creata la partizione da (una di 76,33 a due 30,01 + 46,31)Clic su finish



Fare clic su <commit> icona a forma di bandierina a scacchi



Clic su proceed



Al termine del download



confermare su OK

Fine